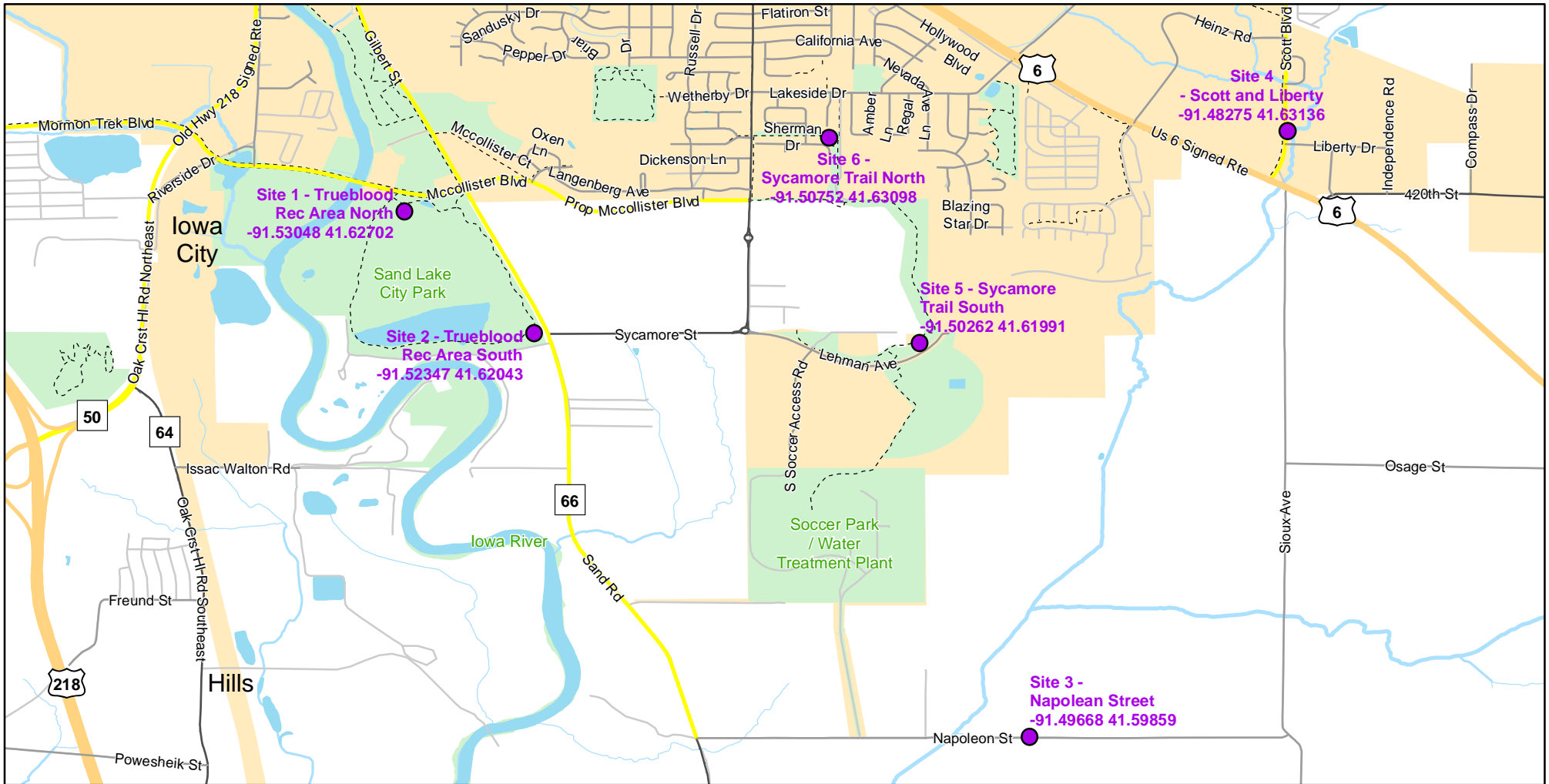




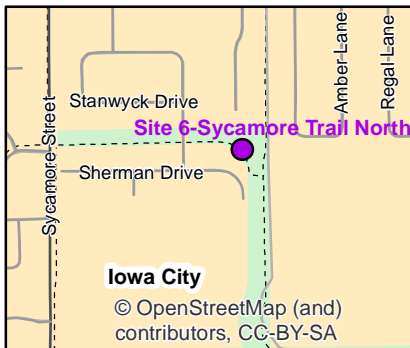
# Volunteer Wildlife Monitoring Program (VWMP) Frog

Route ID: 282 County: Johnson

Click for Google Maps to Site 1: <https://www.google.com/maps/dir/?api=1&destination=41.6270176893,-91.530485038>

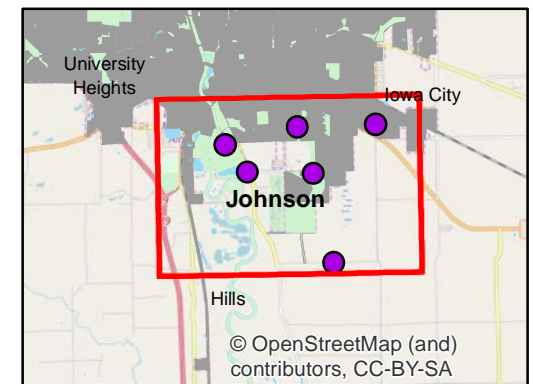
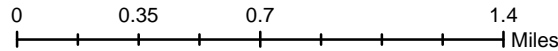


Enlarged View of Site 6



## Legend

----- Trails





# Frog and Toad Call Survey Route Description

Route ID **282**

Established: 2017

Site Number	Name	County	Latitude	Longitude	Directions
1	Trueblood Rec Area North	Johnson	41.6270177	-91.530485	North End of Sand Lake City Park, at Terry Trueblood Rec Area
2	Trueblood Rec Area South	Johnson	41.6204342	-91.5234708	South parking lot by wetland, parking area west of the intersection of Sycamore St and S. Gilbert St (W66)
3	Napolean Street	Johnson	41.5985928	-91.4966839	Farm Pond north side of Napolean St.
4	Scott and Liberty	Johnson	41.6313643	-91.4827515	Just north of the intersection of Liberty Dr and Scott Blvd, North Branch of Snyder Creek runs east along Scott Blvd
5	Sycamore Trail South	Johnson	41.6199064	-91.5026222	On sycamore Trail, running parallel with Lehman Ave and east before the trail comes to a T-intersection
6	Sycamore Trail North	Johnson	41.6309766	-91.5075232	Trail that crosses Sycamore St. Just passed the intersection of Gabe St and the trail, on a curve